

Go Cloud or Go Home!

Honoré LaBourdette

Acting SVP, Global Telco, VP, Telco Partner Ecosystem

Red Hat

MWC24

Colin Bannon

CTO

BT Global



BT Global Fabric

New models for combined TCO are evolving

Application Workloads

Calculate costs of: processor, disk, memory, data egress



Application Workload Layer

Compute

Calculate the most efficient: power, cooling, GPU, DPU, NIC



Infrastructure Layer

New global Hyperscaler network

Latency, egress, transit, circuit cost, port cost, security, SDN



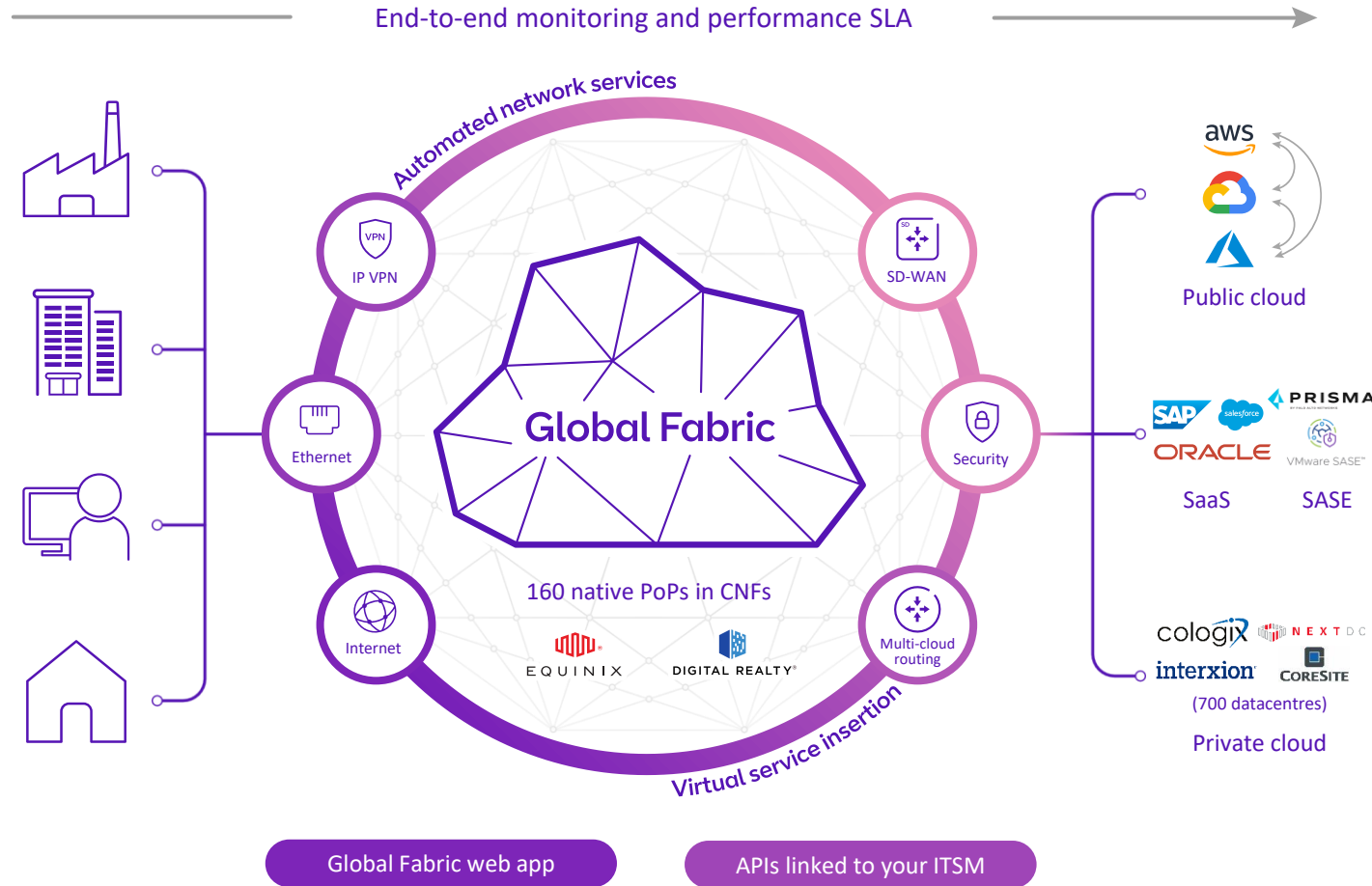
Network

Holistic calculation of value



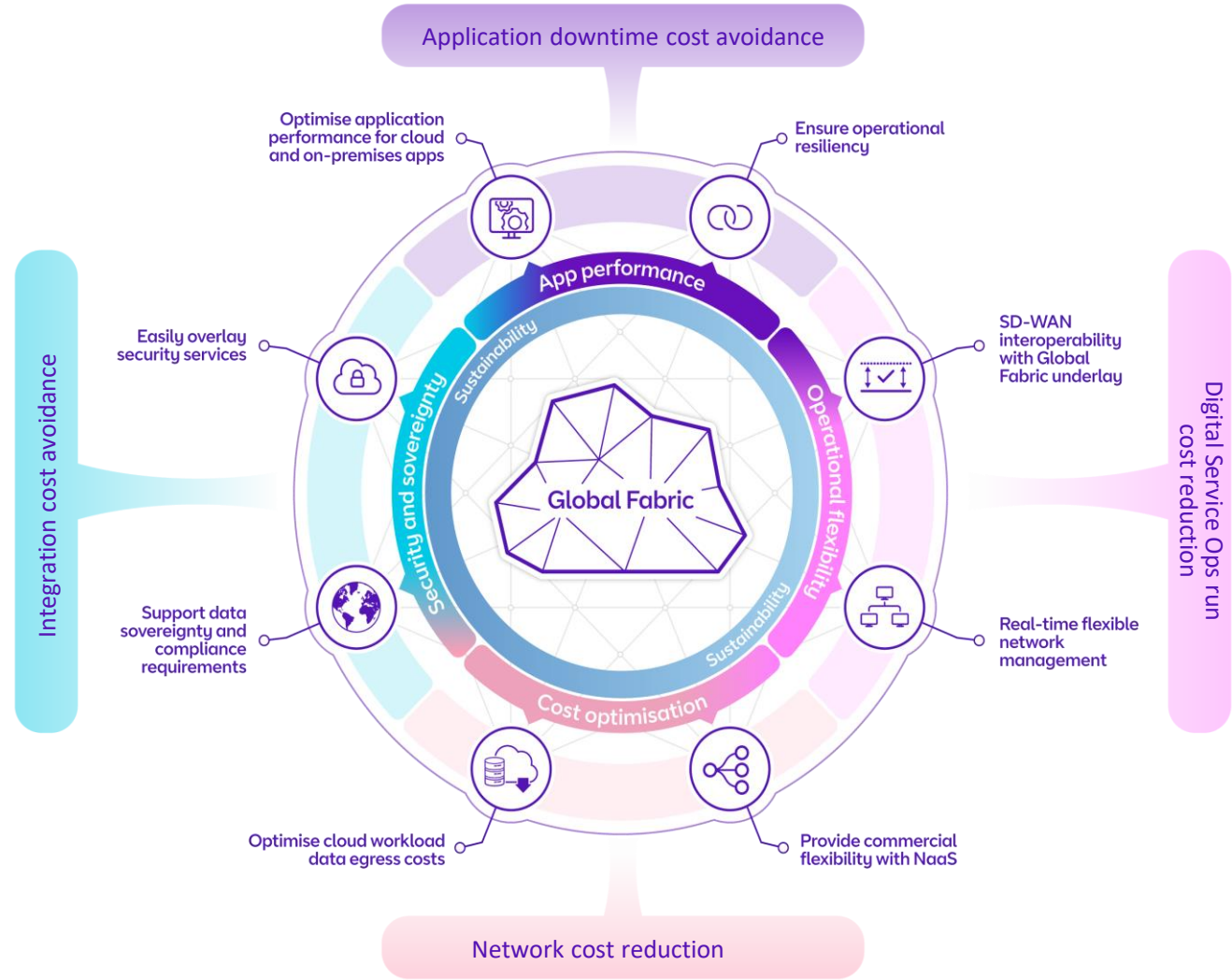
Global Fabric is architected to be cloud centric:

- Programmable platform
- High capacity core
- Optimised global footprint for cloud on-ramps
- Performant connectivity for distributed workloads
- Direct peering with SaaS, SASE & ISPs
- Dense metro architecture for performance under failure
- Both physical and logical service diversity
- Built-in DDoS
- Class-leading sustainability



Our Advisory services supports you to calculate your combined TCO across all layers of your infrastructure


- Application
- Compute
- Network



How to simplify your network deployment with Global Fabric

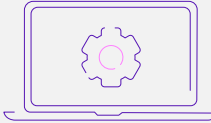
Where do you want to connect from?

1 Plan connectivity



How do you want to connect?

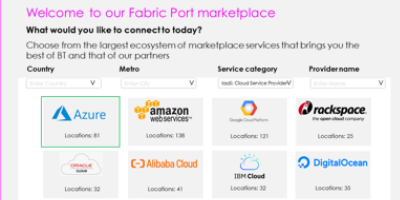
2,3 Configure | Price | Deploy | Monitor



App | API | SNOW

What do you want to connect to?

4,5 Connectivity Marketplace



Plan your network deployment with our interactive location tool.

#2. Buy ports. Buy Access.

Buy and configure access from your sites to our CNF-hosted PoPs.

#3. Attach services

Instantiate and associate network services to your ports.

#4. Connect to Cloud

Connect to around 700 data centres with either dedicated or shared connectivity.

#5. Additional products

Easily add further services through our Marketplace app.

Order journey options

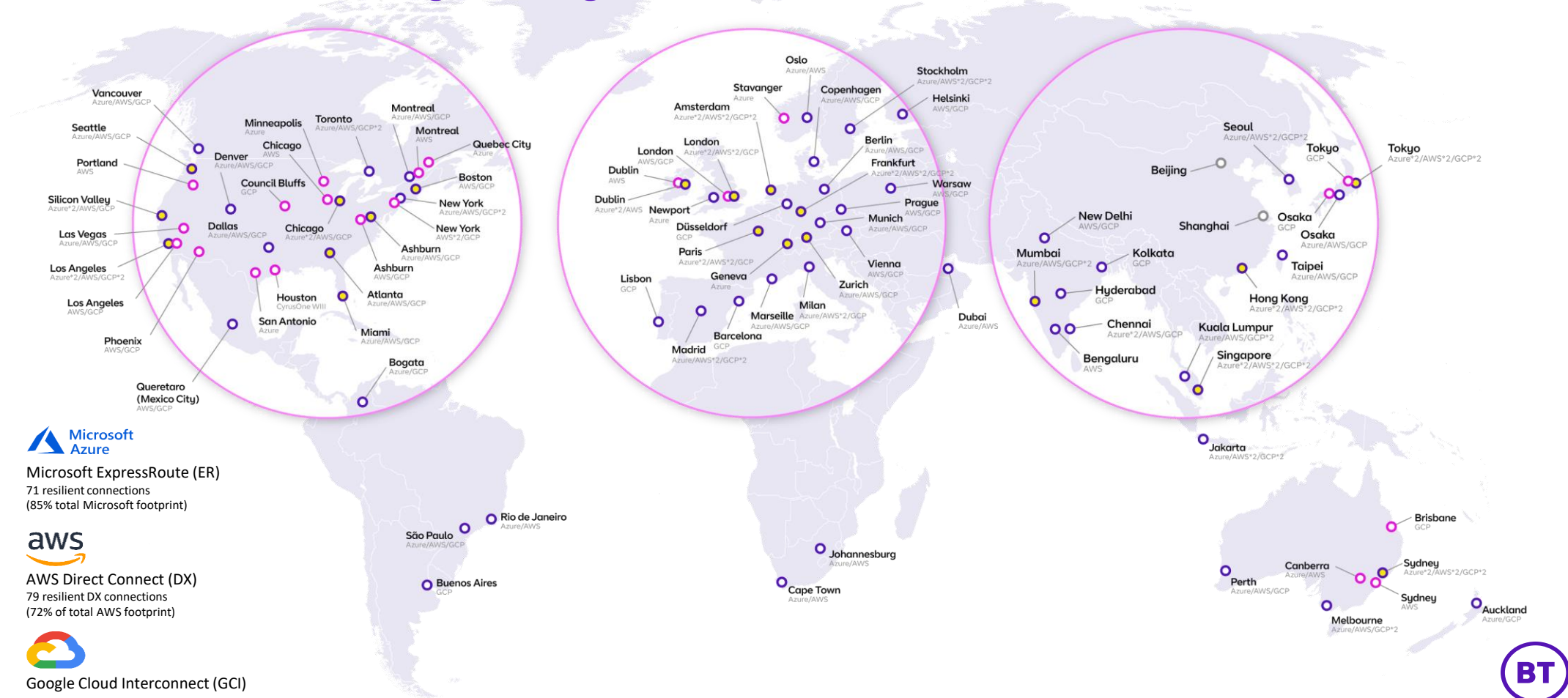
Global Fabric app

API integration

Bulk upload

BT

Future cloud coverage through Cloud Fabric



Microsoft ExpressRoute (ER)
71 resilient connections
(85% total Microsoft footprint)



AWS Direct Connect (DX)
79 resilient DX connections
(72% of total AWS footprint)



Google Cloud Interconnect (GCI)
81 resilient GCI connections
(65% of total GCI footprint)

● BT direct ● 100G available ● Partner port



MWC24



Shawn Haki

VP, 5G Strategy

Microsoft



Go cloud or go home

Operators in the Age of AI



How do we unlock the value of the network as a platform?

Microsoft partner economic value expands with IP focus

For every \$1
of Microsoft
revenue

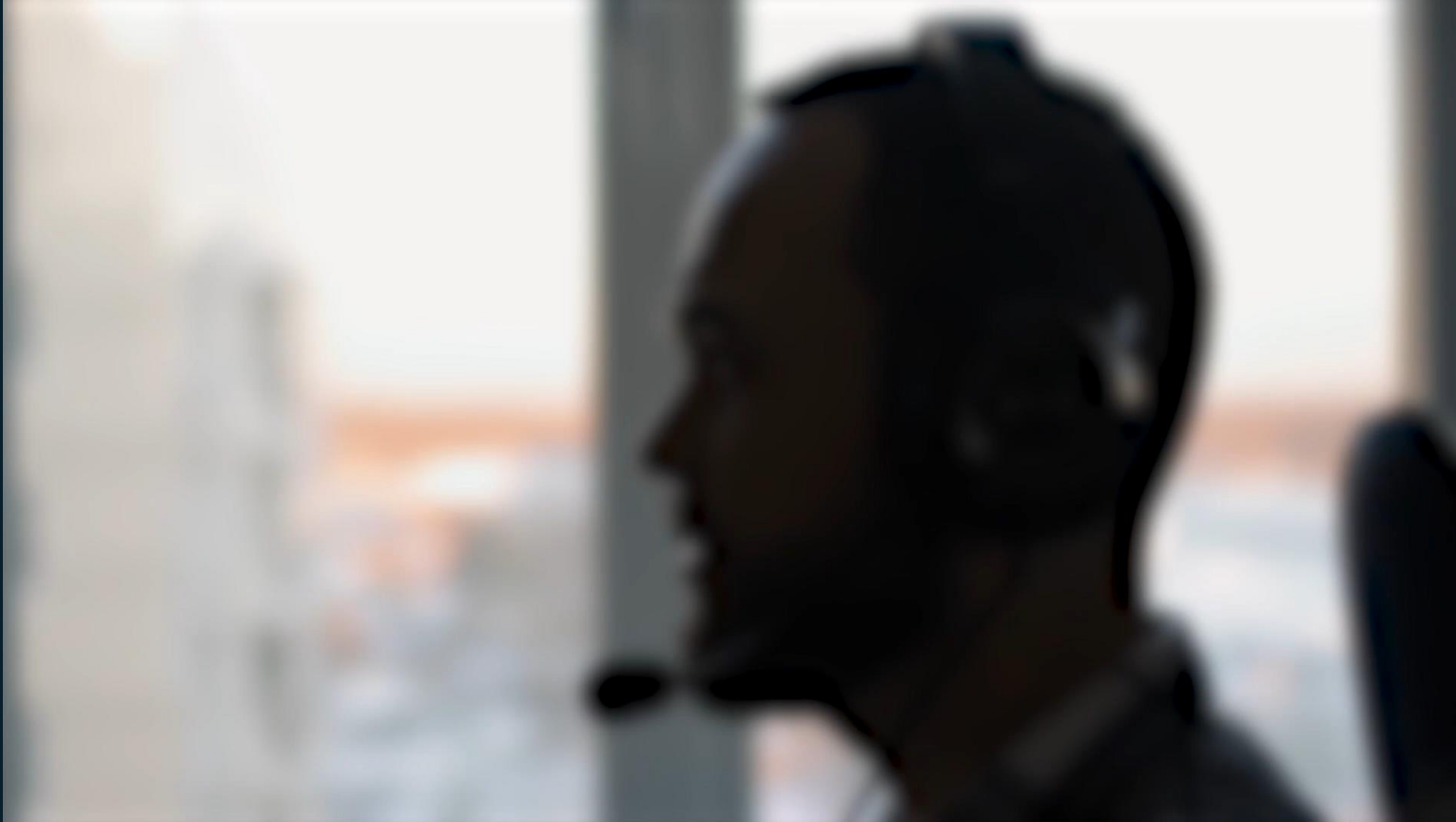
Service-led
partners make
\$7.63
in economic
value

Software-led
partners make
\$10.11
in economic
value

Source: IDC's Microsoft Partner Economic Value Indicator Survey

Monetize with AI, Programmable Network, Edge Compute

New Azure Operator Call Protection demo



**Customers are
modernizing and
monetizing the
network with cloud-
based technology**



Accelerating time to market using hybrid cloud for 5G SA network



Driving innovation using hybrid cloud for 5G SA network



Using power of AIOps to develop powerful customer insights



Creating a more secure network experience with AI



Opening new routes to market and expanding capabilities using AI and cloud

Lessons learned from transforming the network to the cloud



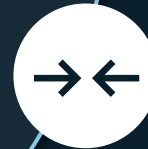
Security



Operations maturity



Vendor lock in



Legacy integration



Talent / Skills

Next steps in monetizing network services

Cloud Networking Insights



Composable Network services integrating network and cloud

- Cloud platform (DevSecOps)
- Orchestration
- Software defined services



Make differentiated networks consumable by developers

- Network API exposure



Use AIOPs to build a better service

- Complex solutions at scale
- Expertise on tap
- Better customer experience
- Reduced operation expense

Azure uniquely meets operators' business needs



36

OpEx savings
compared to private
cloud option



58

operation efficiency
improvement thru
automation

%

90+



compliance certifications—
more than any other public
cloud provider

68,000+



partners, largest
in the industry

%

10s of
millions



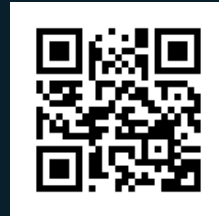
of subscribers on platform

Deep telco DNA

Next steps

Power your network transformation and monetization
with AI and cloud-based technology

Learn more about our announcements here:
[aka.ms/OMB blog](https://aka.ms/OMB_blog)



See demos and speak to SMEs in Microsoft Booth
(Hall 3, Booth 3H30)

Thank you.

MWC24

Anita Döhler

CEO

NGMN Alliance



NGMN CLOUD NATIVE MANIFESTO

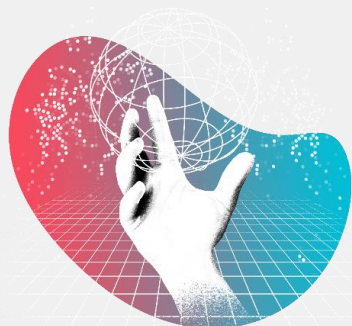
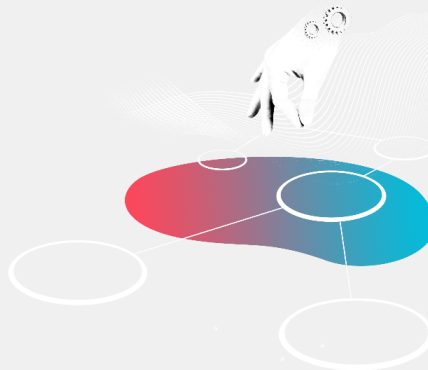
"Go Cloud or Go Home" @ MWC 2024

ngmn.org
anita.doehler@ngmn.org

**WE MAKE BETTER
CONNECTIONS**

STRATEGY

Alongside with projects supporting 5G's full implementation, the focus of NGMN's Work Programme since 2021 is on three Strategic Focus Topics with different time horizons



ROUTE TO DISAGGREGATION

Leading in the development of open, disaggregated, virtualised and cloud native solutions with a focus on the E2E Operating Model

GREEN FUTURE NETWORKS

Building sustainable and environmentally conscious solutions

6G

Emergence of 6G highlighting key trends across technology and societal requirements plus use cases, requirements and design considerations

GLOBAL PARTNERSHIP

OVER 80 COMPANIES SHAPING THE FUTURE OF THE INDUSTRY

MEMBERS



CONTRIBUTORS



ADVISORS



ROUTE TO DISAGGREGATION

OPERATING DISAGGREGATED NETWORKS (ODiN)

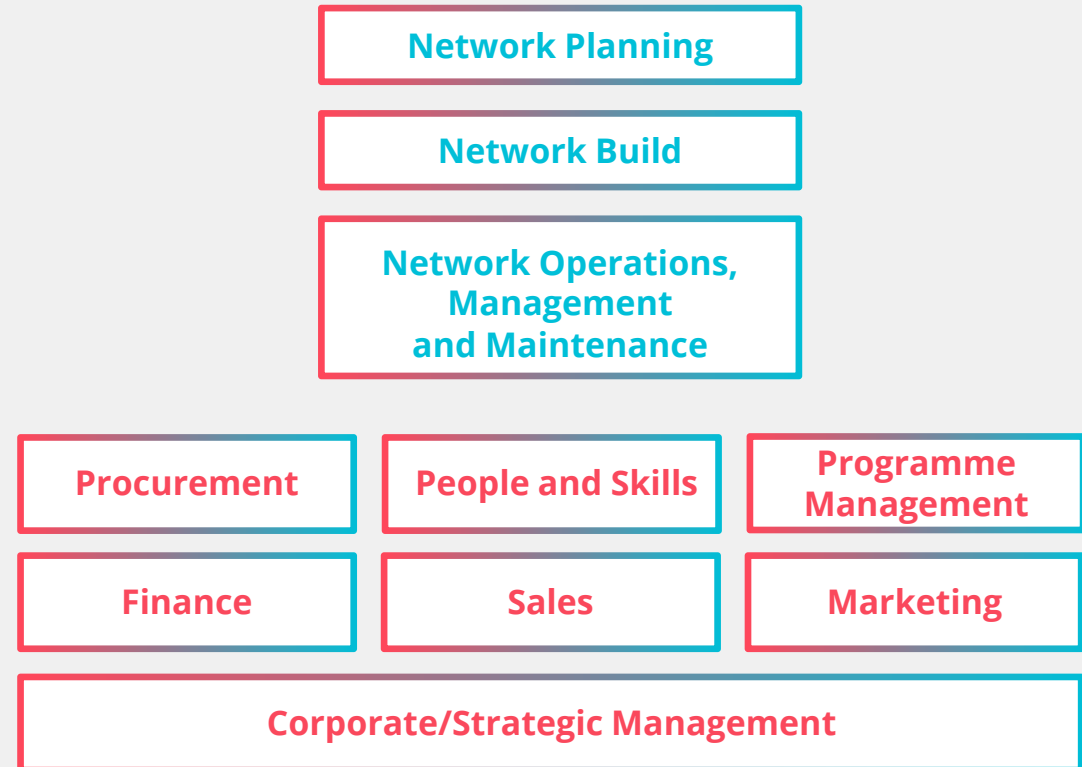


WHY WE NEED OPERATING MODELS

Complexity

- Networks and IT
- Organisation and People
- Range and scope of suppliers

Operating models reduce complexity by defining the right 'target' organisation to match the technology and operations roadmap



ODiN PUBLICATIONS

2021

**ODiN - Operating
Disaggregated
Networks V1.0**

2022

**Operating
Disaggregated
Networks V2.0**

2023

**NGMN Cloud Native
Manifesto**

2024

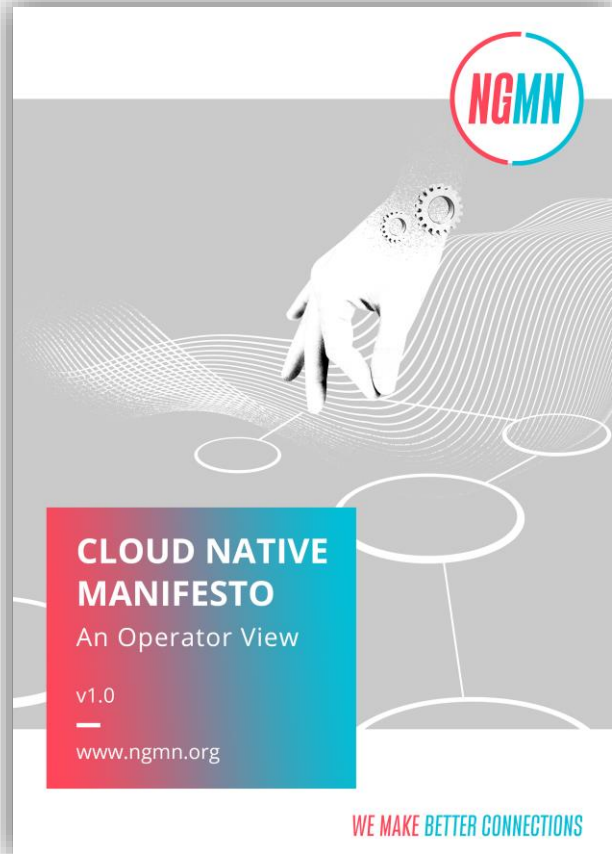
**Operating Model
Blueprints -
planned in Q3-2024**

ROUTE TO DISAGGREGATION

CLOUD NATIVE MANIFESTO

AN OPERATOR VIEW





CLOUD NATIVE MANIFESTO

PUBLISHED SEPTEMBER 2023

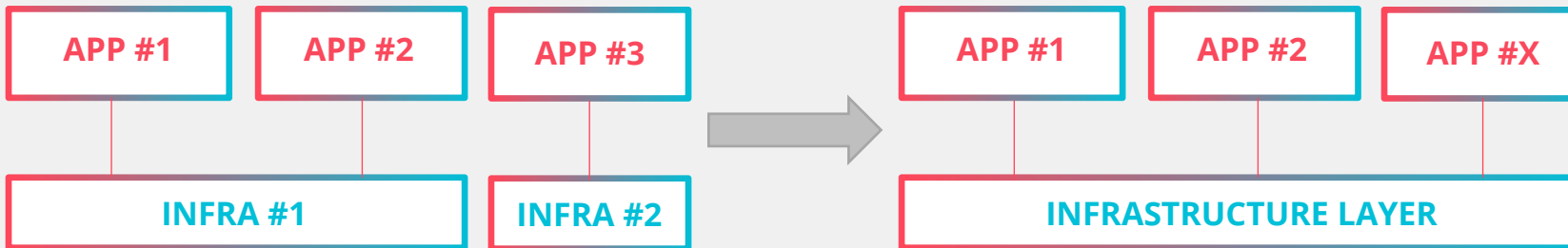
1. Decoupled infrastructure and application lifecycles over vertical monoliths
2. 'API first' over manual provisioning
3. Declarative and intent-based automation
4. GitOps principles
5. Unified Kubernetes (or the like) resource consumption patterns
6. Unified Kubernetes (or the like) closed-loop reconciliation patterns
7. Interoperability by well-defined certification processes

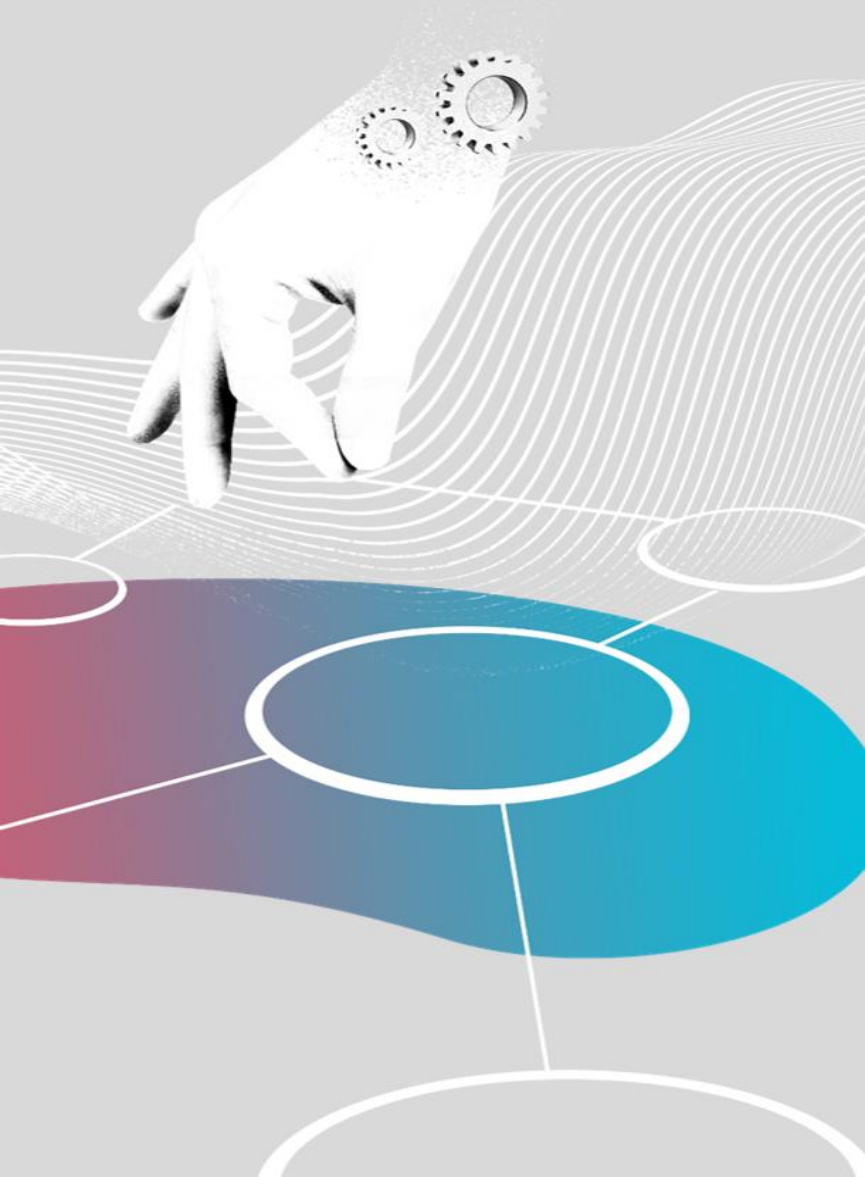
Open. Interoperable. Highly scalable.

DECOUPLED INFRASTRUCTURE AND APPS

OVER VERTICAL MONOLITHS

- Expose infra (K8S or similar) in a standard way to Apps
- Any software, app, network function to be on-boarded by any hardware, container platform or public domain





DECLARATIVE AND INTENT-BASED OPERATION

APIs AND AUTOMATION OVER MANUAL OPERATIONS

- Application description based on standards
- Define services in a declarative way and expose them via API
- Intent-based rather than imperative / instruction-based workflows

**Reduce OPEX and ready for AI driven
Automation and Lifecycle Management**

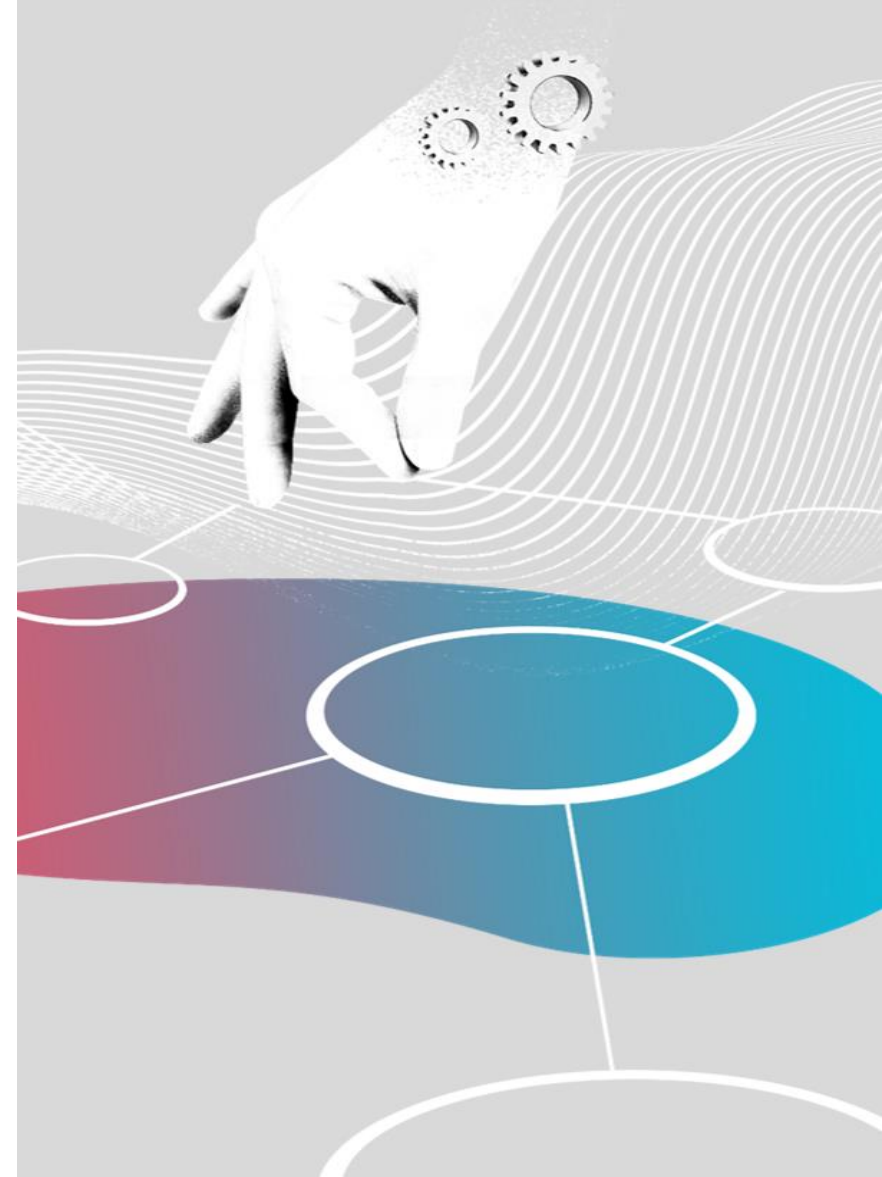
GITOPS PRINCIPLES

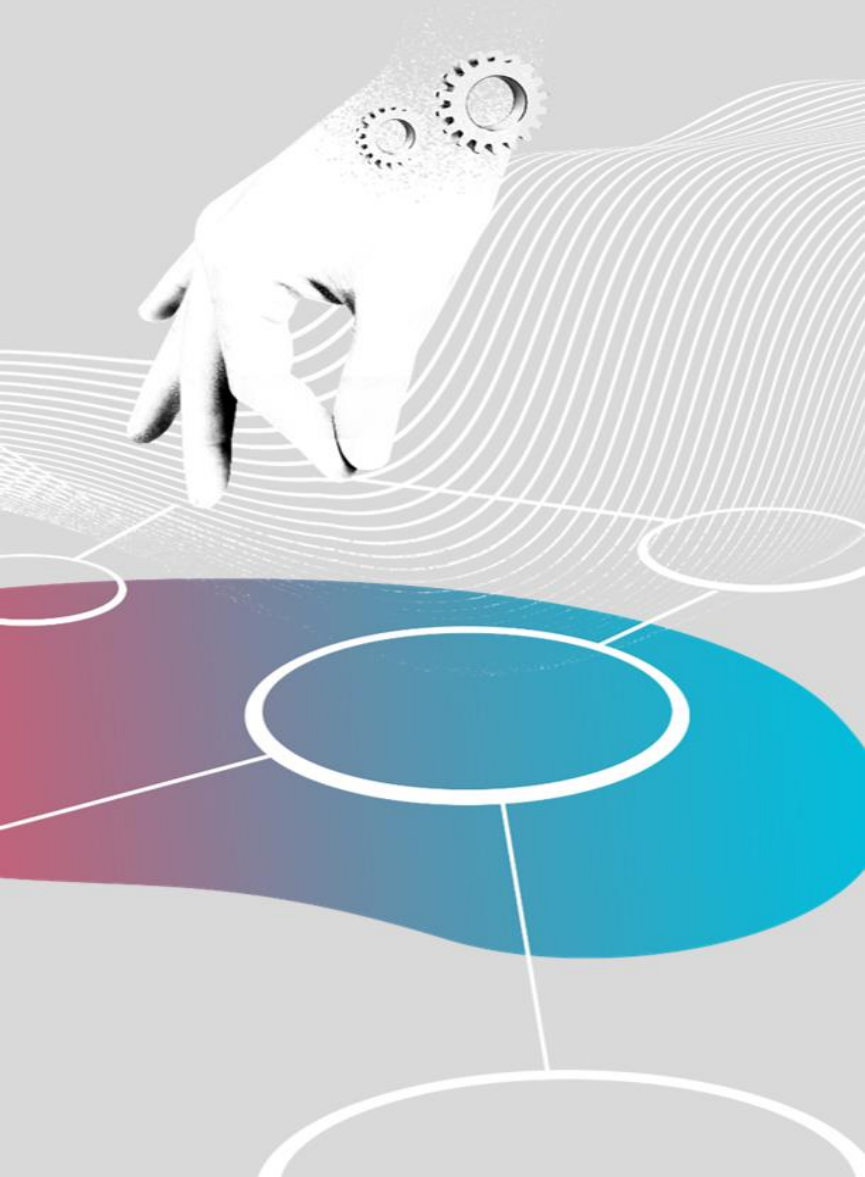
MANAGING LIFECYCLE AND RELEASES

Application lifecycle management is entirely automated through a digital pipeline process

Source of truth repository driving automatic deployment

Pipelines must be interoperable, through GitOps repositories and integration labs





UNIFIED KUBERNETES (OR SIMILAR)

NORMALISING THE RUNNING ENVIRONMENT FOR CLOUD NATIVE
APPS

- No vendor or domain specific resource controllers or element management practices for the infrastructure layer
- Microservices architecture
- Horizontal scalability
- Auto-healing

WELL DEFINED CERTIFICATION PROCESSES



- To ensure interoperability
- To reduce testing and integration costs
- To reduce time to market and increase adoption





THANK YOU

In case of further questions please contact
office@ngmn.org

Follow us on [LinkedIn](#)

KEY PUBLICATIONS

9 PUBLICATIONS IN 2023



Results of our Work-Programme:

Internationally recognised requirements, recommendations and guidance to the industry and for standardisation

<https://www.ngmn.org/publications.html>



NGMN IC&E 24 -

**INDUSTRY CONFERENCE AND
EXHIBITION**

NGMN IC&E 24

10 - 12 SEPTEMBER 2024 @ BMW WELT, MUNICH/GERMANY

- A highly recognized biennial global industry event
- Spotlight on NGMN's Strategic Focus Topics
- Platform for unique networking opportunities with global industry leaders from operators, telco & IT vendors, academia
- Conference and exhibition demonstrating state of the art concepts, key trends, innovations and challenges shaping the mobile landscape
- 300+ top management level participants
- Premium facilities @ BMW Welt
- Valuable marketing opportunities



MWC24

Mallik Rao

Chief Technology & Information Officer

Telefónica Germany GmbH & Co OHG



Telefónica

HOW TELCOS ENGINEER THEIR SUSTAINABLE FUTURE THROUGH THE CLOUD



Mallik Rao

Chief Technology & Information Officer
O₂ Telefónica

27th February 2024

MWC

OUR JOURNEY

CLOUD CENTER OF EXCELLENCE

165
apps in
production

47
apps in
pipeline

80%
target for apps
in the cloud

30^x
increased
cloud consumption

WHAT'S IN THE CLOUD?

- Transformed IT full stack
- 5G packet core
- 2 data warehouses
- Finance systems, internal tools, workplace, development functions

LEARNINGS

Data security &
sovereignty

Upskilling of
people & organization

Network load
on cloud

Financial efficiencies

WHAT'S NEXT

TELCO CLOUD
in combination with
network & operations
transformation

**AI
CAPABILITIES**
as scale

CLOUD NATIVITY
across the whole organization



Telefónica

MWC24

Moderator: Honoré LaBourdette

Red Hat

Colin Bannon

BT Global

Shawn Haki

Microsoft

Anita Döhler

NGMN Alliance

Mallik Rao

Telefónica Germany GmbH & Co OHG

Up Next

Ink, Wear, Touch: Evolution of Personal Tech

13:15 - 14:15

MWC24